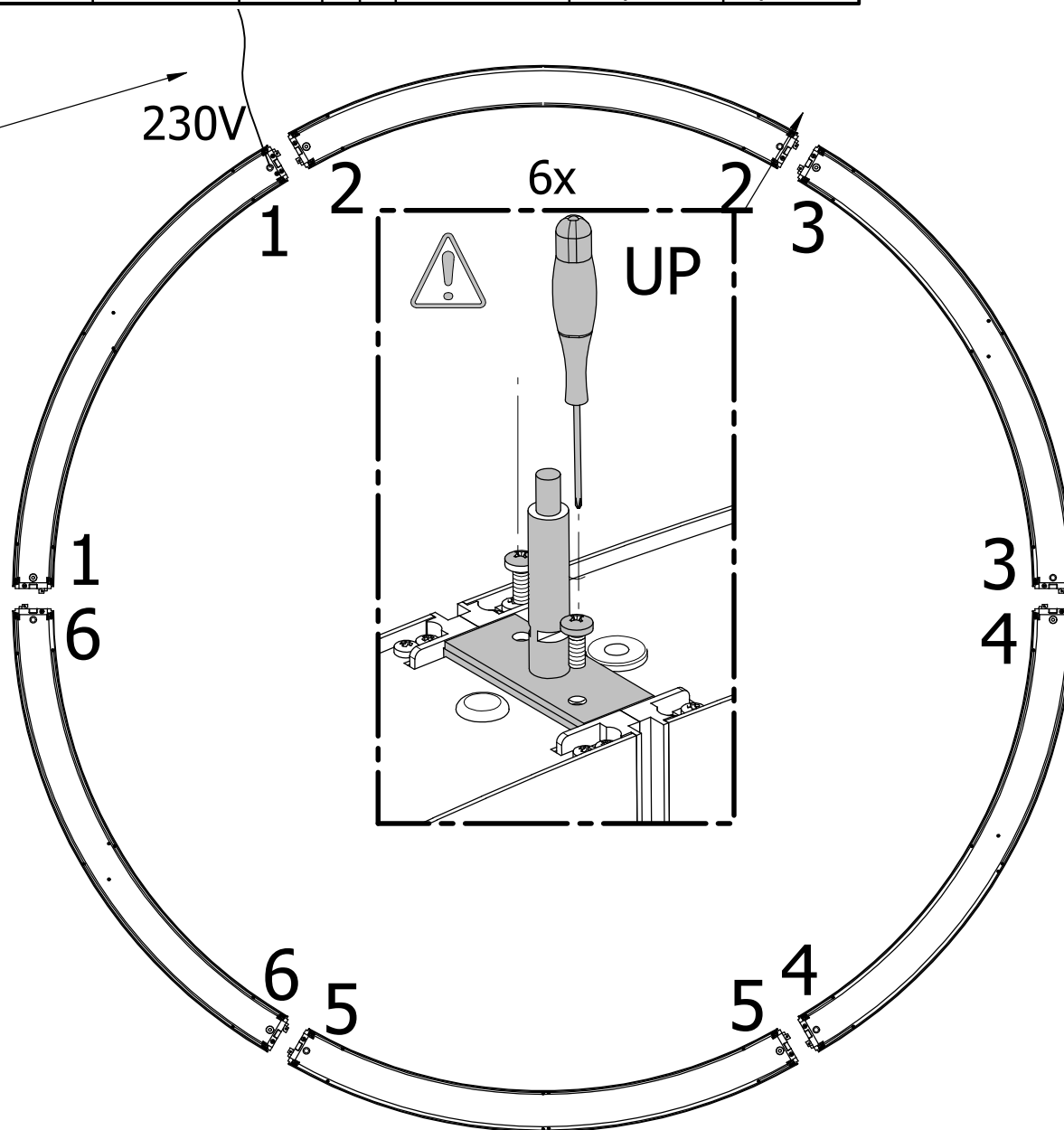
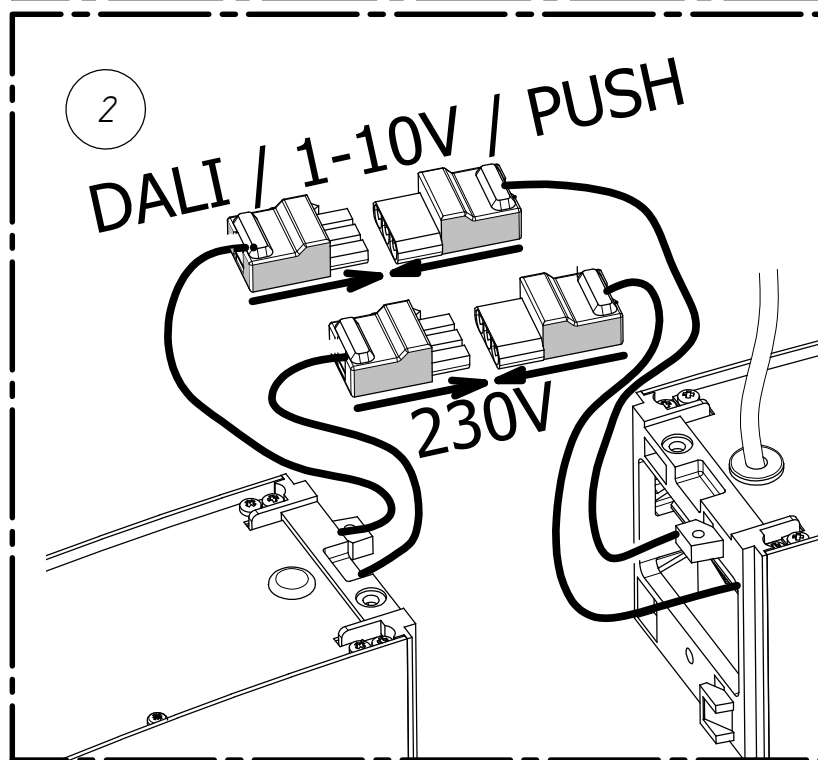
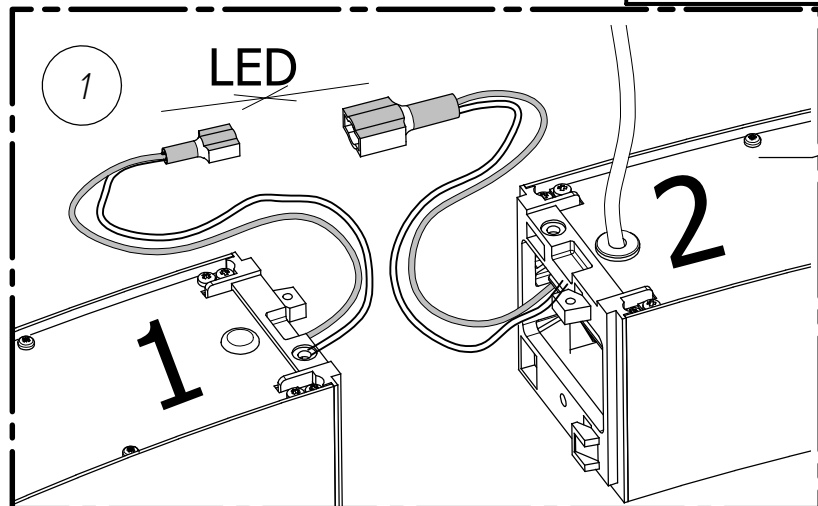
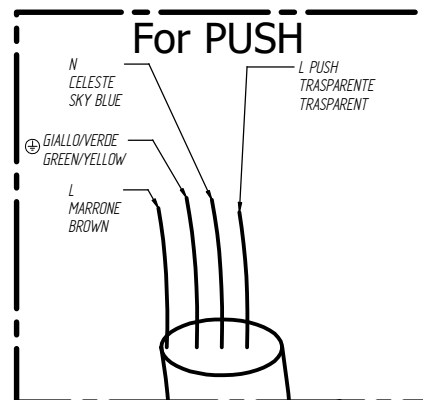
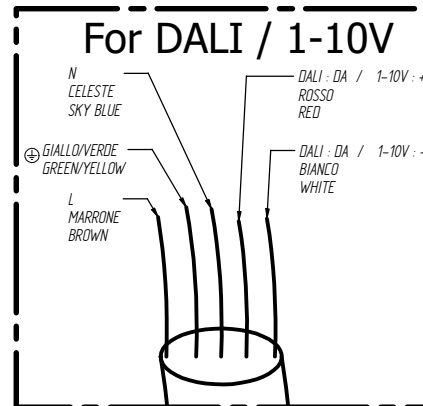
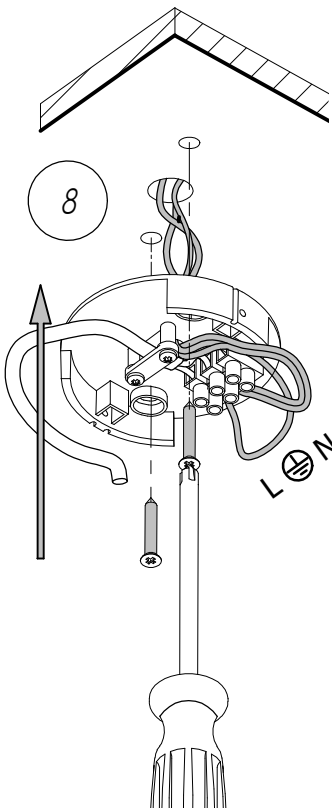
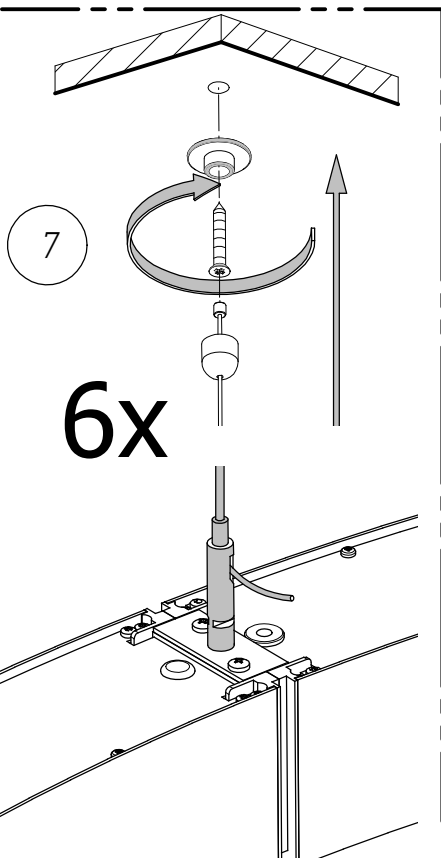
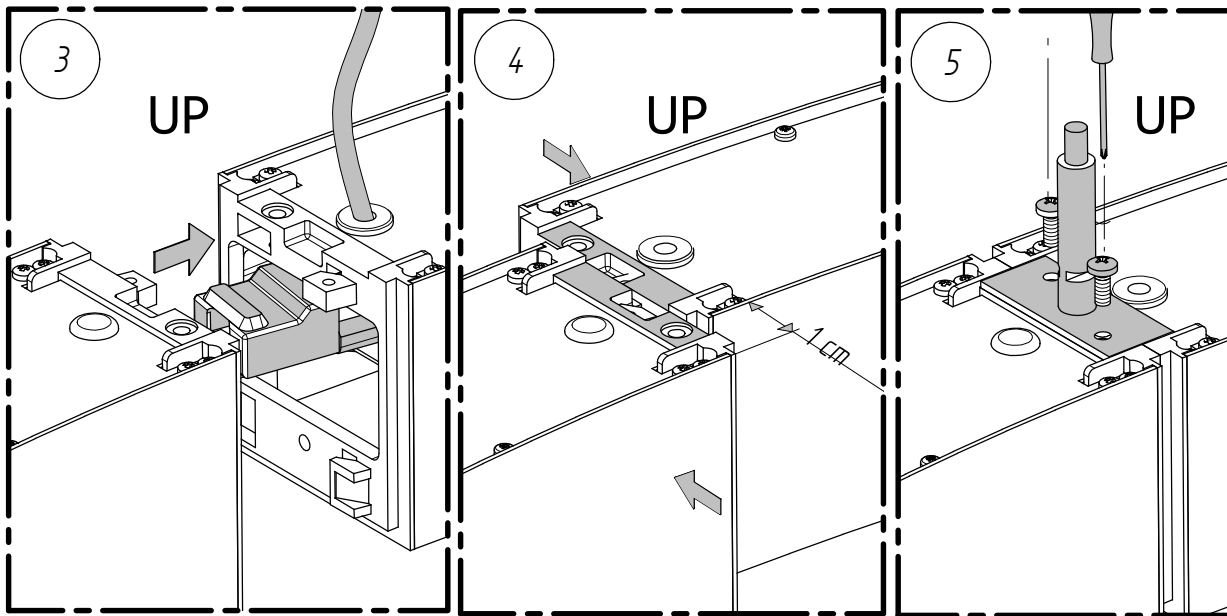


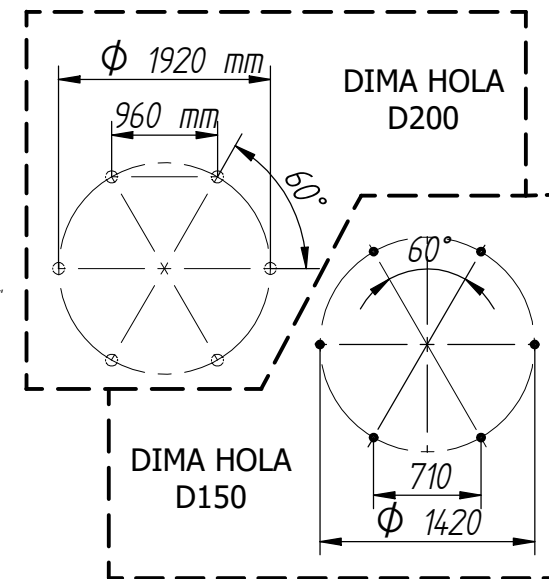
E2327C000

CODICE						POTENZA		
358 50 50 --		LED	IP40	⊕	⊖	130W	220/240V	50/60Hz
358 56 50 --		LED	IP40	⊕	⊖	90W	220/240V	50/60Hz
358 57 50 --		LED	IP40	⊕	⊖	90+45W	220/240V	50/60Hz
358 52 50 --		LED	IP40	⊕	⊖	130+65W	220/240V	50/60Hz



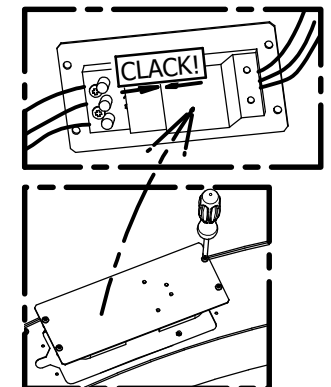
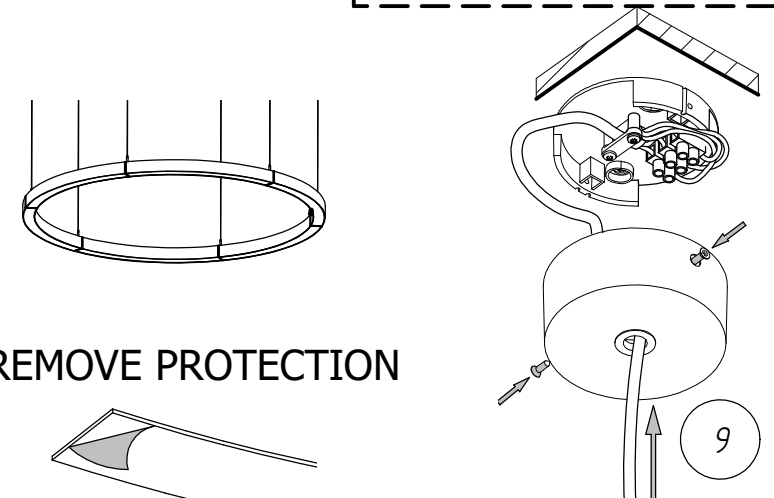


- 6
- ⚠
- I Effettuare il fissaggio della montatura del sistema con idonei tasselli e viti
  - F Effectuer la fixation du systeme avec des vis et des chevilles adaptees
  - GB Secure the anchor bracket or stud to the wall, using appropriate screw anchors and screws
  - D Befestigung des Gerates mit geeigneten Dübeln und Schrauben vornehmen
  - E Efectuar el fijado de la montura del sistema con tacos y tonillos idoneos

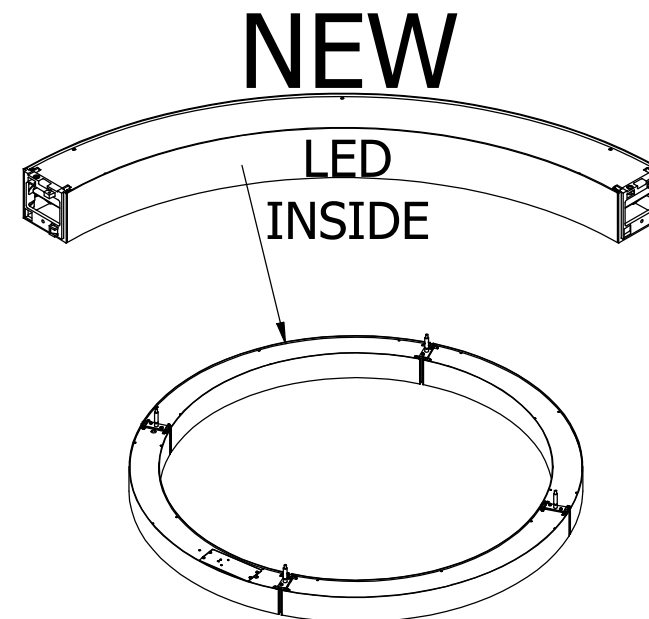
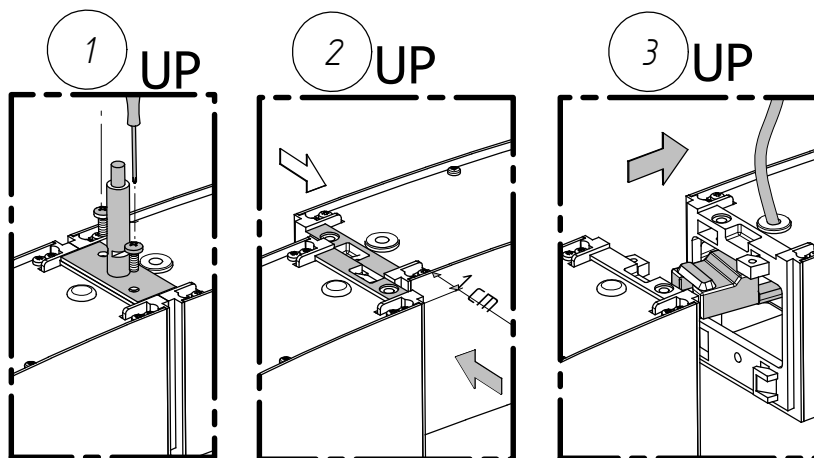
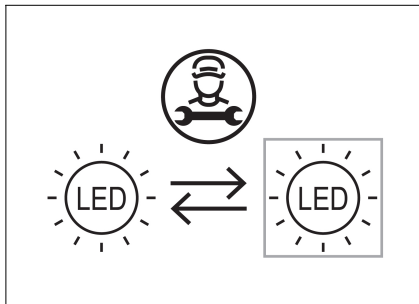


10

REMOVE PROTECTION



E2327C000



**ENERGY CLASS REF. 35856/35857/35850/35852/**

IT: Questo prodotto contiene una sorgente luminosa di classe di efficienza energetica C

GB: This product contains a light source of energy efficiency class C

F: Ce produit contient une source lumineuse de classe d'efficacité énergétique C

D: Dieses Produkt enthält eine Lichtquelle der Energieeffizienzklasse C

E: Este producto contiene una fuente luminosa de la clase de eficiencia energetica C

