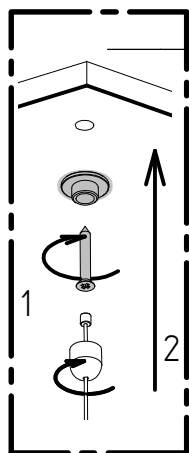


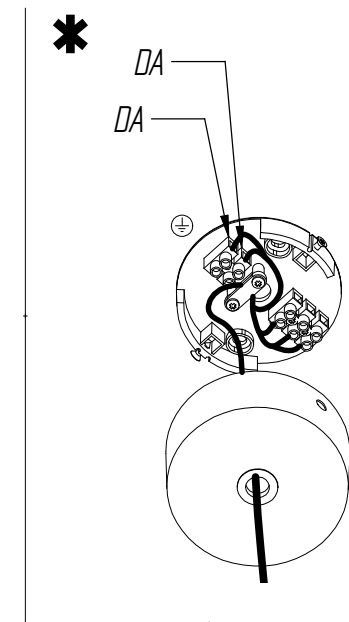
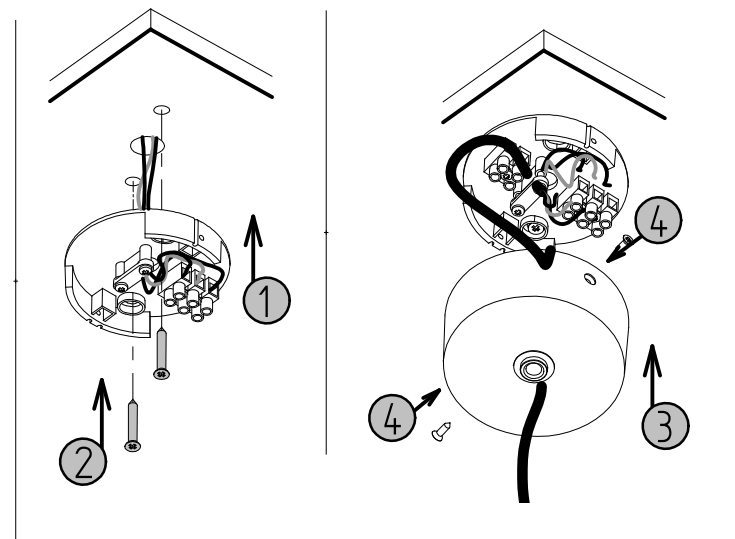
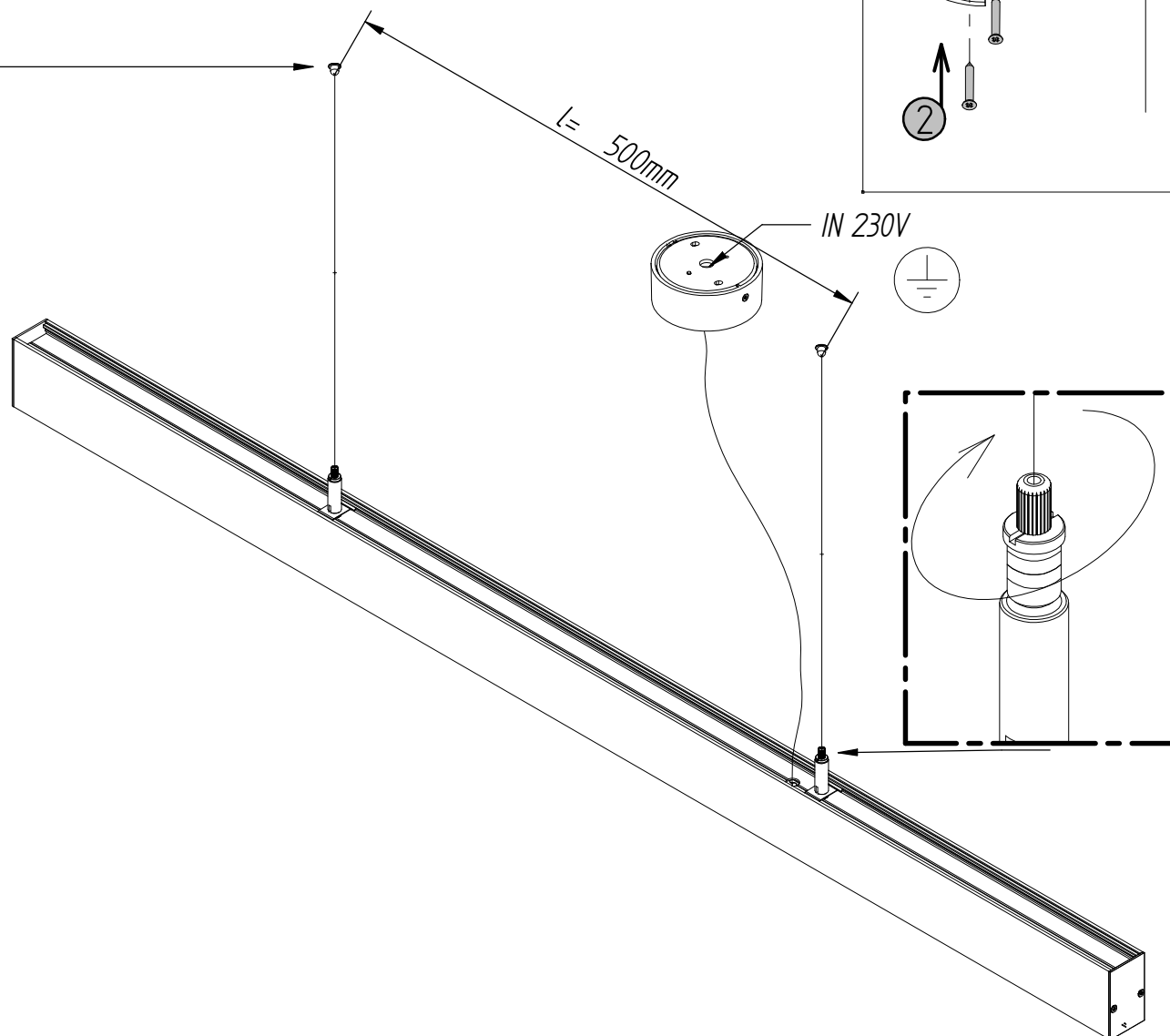
exenia
lighting

E2324C000

CODICE	ATTACCO	LAMPADA			POTENZA			
7085050--		LED	IP40	⊕	25W	220/240V	50/60Hz	
7085150--		LED	IP40	⊕	31W	220/240V	50/60Hz	
7085250--		LED	IP40	⊕	31W	220/240V	50/60Hz	
7085350--		LED	IP40	⊕	37W	220/240V	50/60Hz	
7085165--		LED	IP40	⊕	25+6W	220/240V	50/60Hz	DALI

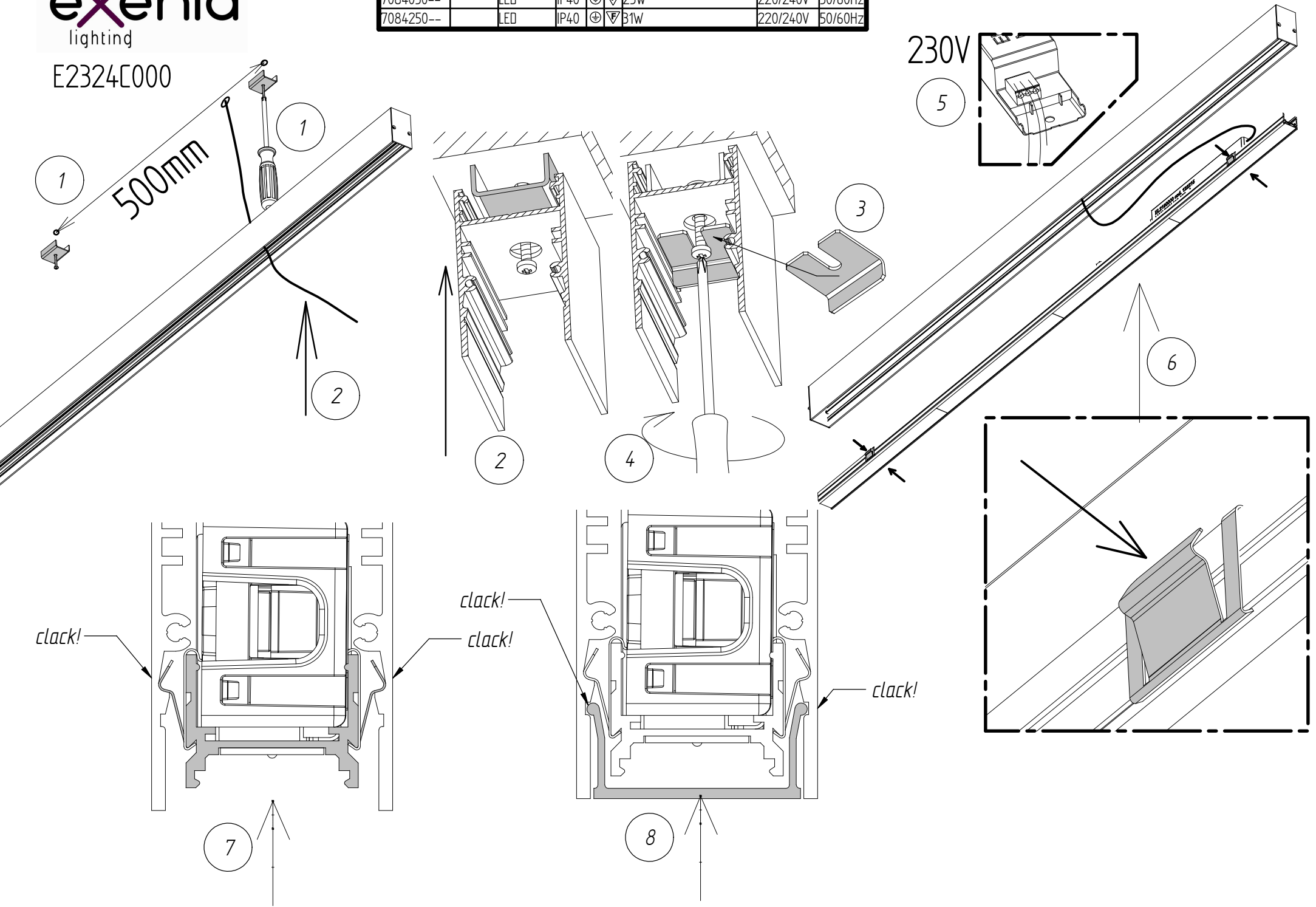


- I Effettuare il fissaggio della montatura del sistema con idonei tasselli e viti
- F Effectuer la fixation du systeme avec des vis et des chevilles adaptees
- GB Secure the anchor bracket or stud to the wall, using appropriate screw anchors and screws
- D Befestigung des Gerates mit geeigneten Dübeln und Schrauben vornehmen
- E Efectuar el fijado de la montura del sistema con tacos y tornillos idoneos

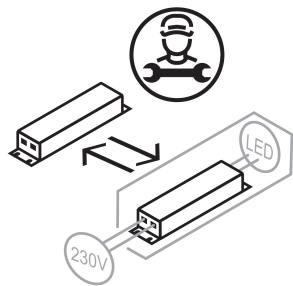
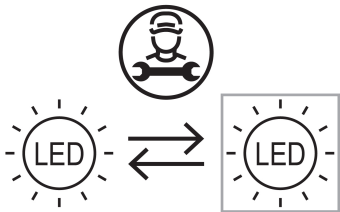


E2324C000

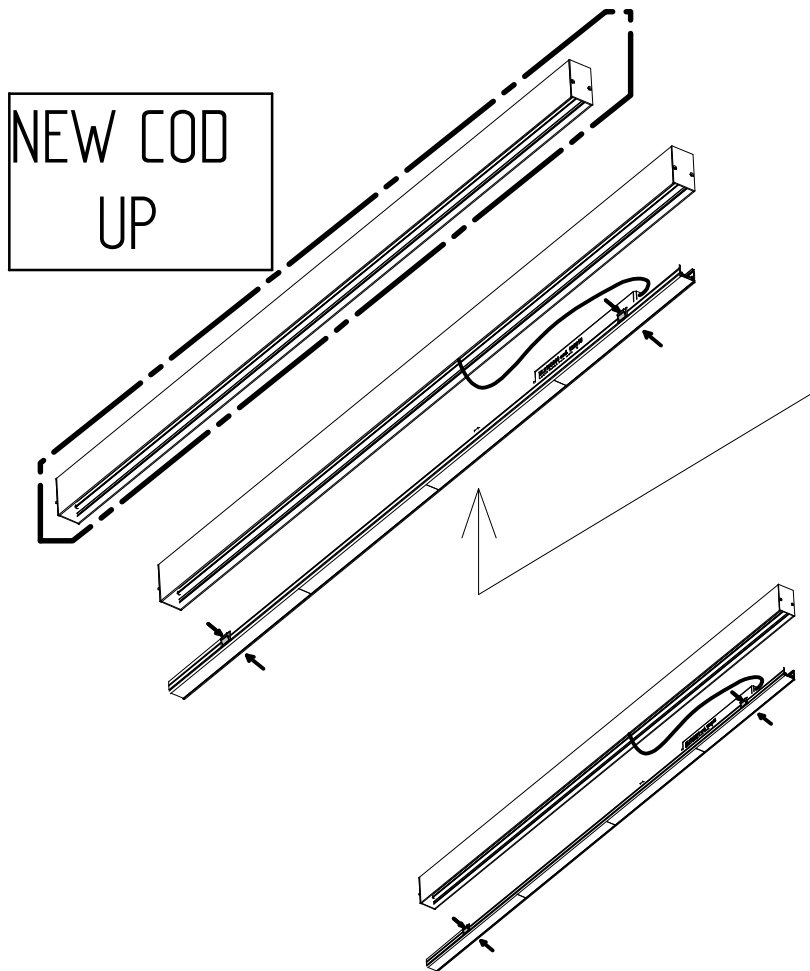
CODICE	ATTACCO	LAMPADA			POTENZA		
7084050--		LED	IP40	⊕	25W	220/240V	50/60Hz
7084250--		LED	IP40	⊕	31W	220/240V	50/60Hz



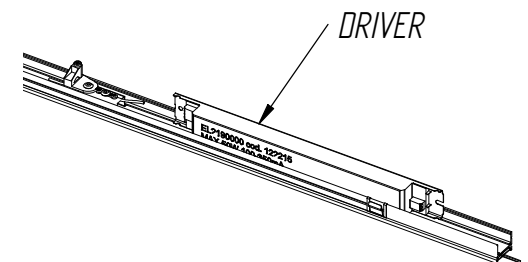
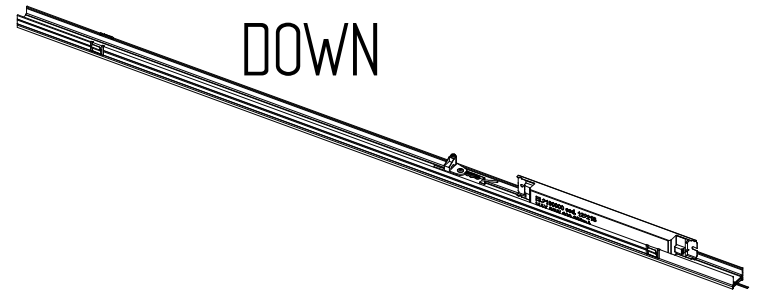
exenia
lighting
E2324C000



NEW COD
UP



NEW COD
DOWN



ENERGY CLASS REF.
2700K/3000K/4000K

IT: Questo prodotto contiene una sorgente luminosa di classe di efficienza energetica D

GB: This product contains a light source of energy efficiency class D

F: Ce produit contient une source lumineuse de classe d'efficacité énergétique D

D: Dieses Produkt enthält eine Lichtquelle der Energieeffizienzklasse D

E: Este producto contiene una fuente luminosa de la clase de eficiencia energetica D